

WPC WALL CLADDING
OUTDOOR FEATURE

WPC WALL CLADDING

Offering realistic timber textures and colours, Serfloor's WPC Wall Cladding is the most effective alternative for all outdoor cladding applications. Made from a composite of wood and plastic, it is lightweight, yet durable and ready to install.

Serfloor's WPC Cladding is widely used in residential and commercial applications such as health facilities, educational insitutions, hospitality, retail and shopping complexes. It is an architectural feature that is guaranteed to elevate your next project.

COLOURS AVAILABLE



BLACK



STONE GREY



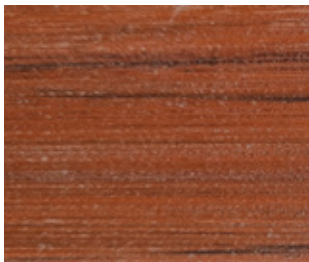
WHITE



LIGHT OAK



WALNUT



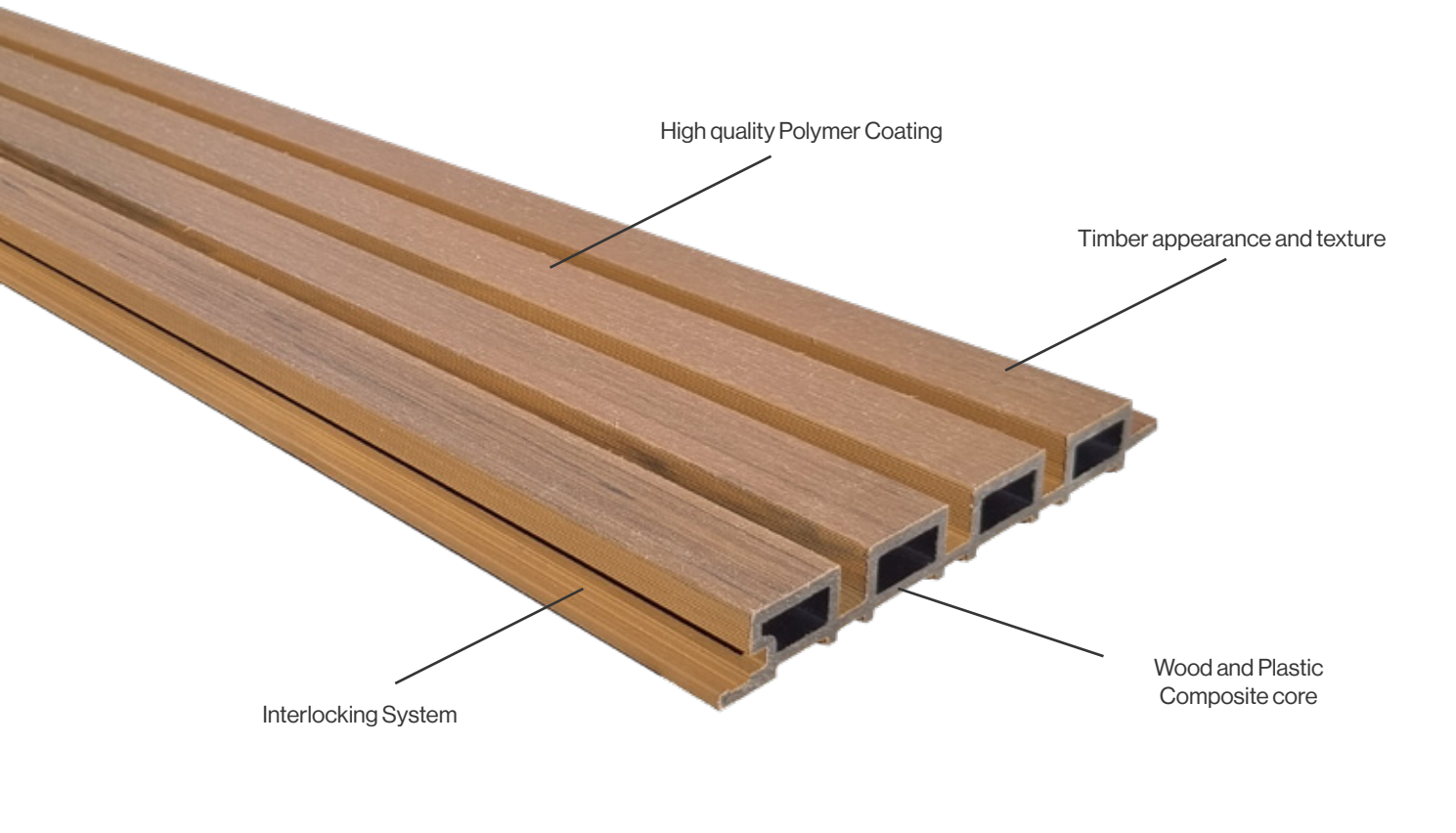
JARRAH



SPOTTED GUM



TEAK



| NAME | DIMENSIONS | LM PER PIECE | SQM PER PIECE | WEIGHT |
|--------------|--------------------|--------------|---------------|----------------|
| WPC Cladding | 219 x 26 x 2900 mm | 0.2 lm | 0.58 sqm | 8.5 kg / piece |

- Lightweight and Durable
- Can be applied to most walls and ceilings
- Eco-Friendly Material
- 4-5mm x 40-60mm stainless steel screws (depends on joist size) needed
- Low maintenance
- 15 Years Manufacturer's Warranty
- Suitable for Outdoor and Indoor Use
- Corner pieces available
- Can be installed Vertically or Horizontally
- No Sanding, Priming or Painting Required
- Waterproof, Weatherproof
- Termite and Rot Resistant
- Fire Resistant
- Thermal and Acoustic Insulation





WPC WALL CLADDING



Timber Look Texture and Colours



Easy to Clean

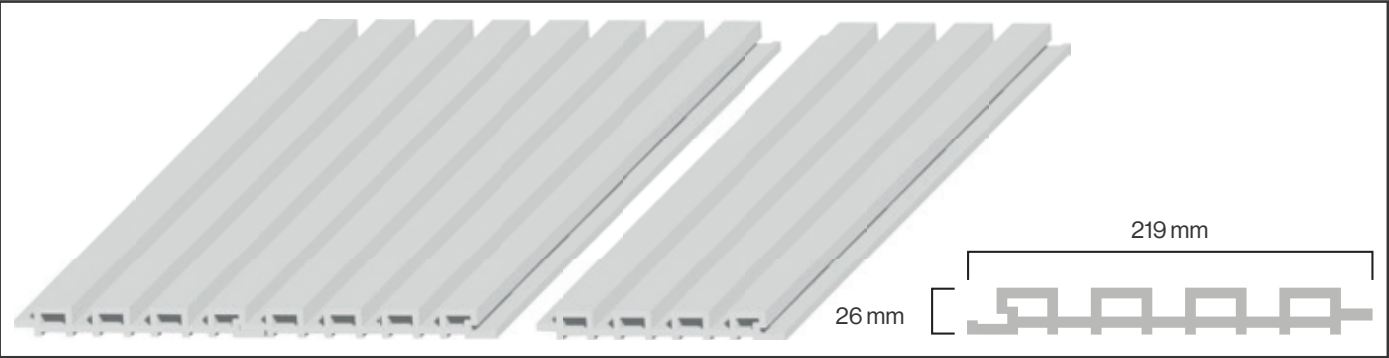


Quick and Easy Installation



Suitable for Commercial and Residential Projects

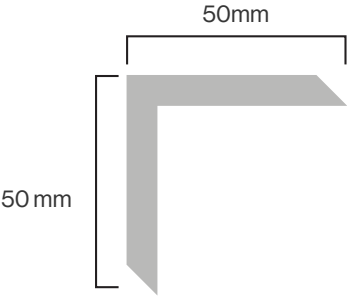
| | STANDARD | RESULT |
|----------------------------|-------------------------|---|
| Total Thickness (mm) | EN 428 | 26 mm |
| Weight (+/- 50gr/m2) | EN 430 | 14.655 kg/m2 |
| Plank Dimension | EN 427 | 219 mm x 2900mm |
| Density | EN 15534.1-2014 | 1290kg/m2 |
| Moisture Content | EN 15534.1-2014 | 0.16% |
| Linear Thermal Expansion | EN 15534.1-2014 | 40.1*10 ⁻⁶ K ⁻¹ |
| BRINELL Hardness | EN 15534.1-2014 | 77 |
| Slip Classification | DIN 51097-1992 | C |
| Heat Build-up | EN 15534.1-2014 | -0.7°C (30°C); -3.8°C (50°C); -3.4°C (80°C) |
| Fire Resistance | EN ISO 572.2 | Flame Propagation: 29/31mm |
| | EN ISO 9239.1 | Critical Radiant Heat Flux: 4.7/4.9kw/m2 |
| Impact Resistance | EN 15534.1-2014 | PASS |
| Tensile Property | EN ISO 572.2 | MOR: 21.91MPa |
| | | MOE: 5054MPa |
| | | Elongation: 0.35% |
| Flexual Property | EN 15534.1-2014 | Bending Rupture Load: 3540N |
| | | 500N: 1.63mm |
| Boiling | EN 15534.1-2014 | L: 0.14%; W:0.29%; T: 1.16%; Q:1.95% |
| Heat Recovery | EN 15534.1-2014 | AL: 0.06%; W: 0.03% Q: 0.11% |
| Punching | EN 15534.1-2014 | Nail: 70N/mm2 |
| | | Staple: 24N/mm2 |
| Water Absorption (28 days) | EN 15534.1-2014 | L: 0.09%; W: 0.32%; T:3.05%; Q:5.05% |
| Freeze-thaw Resistance | EN 15534.1-2014 | Fmax: 3.39% |
| Fungi Classification | ISO 16869-2008 | 0 grad |
| Colour Fastness | ISO 4892.2-2013 | 720h 4 (depend on the product colour) |
| OIT Test | ASTM D3895.07 | > 35min |
| Formaldehyde | EN 7171-2014 | PASS |
| TeCP and PCP | ZEK 011-08 | ND |
| Phthalate | BS EN 15777-2009 | ND |
| PAHs | GS2014.01 PAK | PASS |
| Cadmium | US EPA 3050B /3051/3052 | ND |
| SVHC | REACH (EC) 1907/2 006 | PASS |



CORNER PIECE

Use Serfloor’s WPC Corner pieces to complete your installation. Commonly used around corners, it can also be a good choice to frame windows and doors, where the WPC Cladding is used.

- Matching colours to Cladding
- Weatherproof
- Fire Resistant
- No sanding, priming or painting required
- Lightweight and durable
- 2.9 m length to suit our WPC Cladding range



Colour and Pattern Reproduction

Serfloor photography and print cannot always produce a perfect representation of our product. This includes the appearance of colour, pattern variation and the installation elements used. For this reason, we strongly recommend you obtain a product sample and view the product in a larger display where possible, in order to see the flooring design in a large-scale setting before purchase and installation. Just like real timber, the patterns in our products can have natural variations.

The colour and pattern trends do change and to ensure we continue to supply our customers with the latest colours and styles, products and colours are sometimes discontinued. If this happens, we will always do our best to help you find a colour and pattern you will love just as much.

We suggest visiting our website for information about care and maintenance, and installation.

If you don't find what you are looking for or require more information, please contact us directly via email at info@serfloor.com.au



SER FLOOR
AUSTRALIA

info@serfloor.com.au | (03) 9796 4626
www.serfloor.com.au

Back cover: Teak | Front cover: Walnut